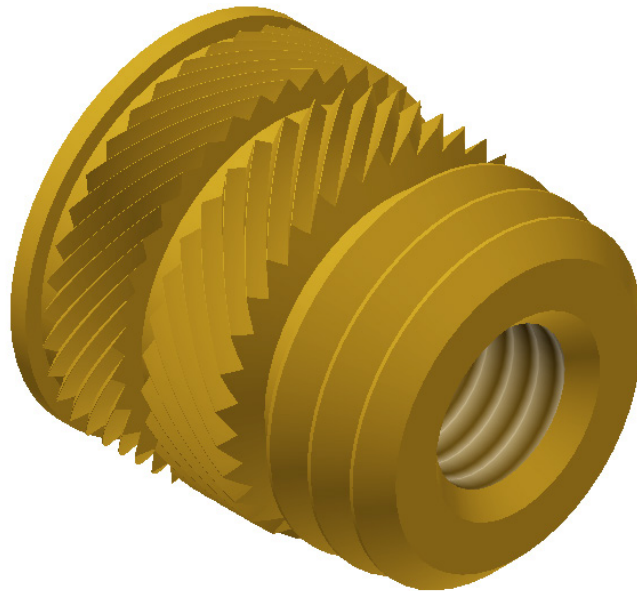


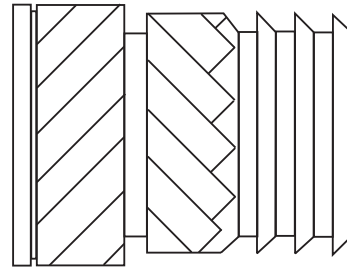
# HI-TORK INSERTS

RECOMMENDED FOR HIGH FILL PLASTICS  
WITH REDUCED INSTALLATION DEPTH.



# HI-TORK INSERTS

Offering high pull-out/torque performance. Hi-Tork is recommended for high fill plastics with reduced installation depth.



## ADVANTAGES

- High pull-out and torque performance
- Capable of providing “bolt break performance”
- Especially recommended for high fill plastics
- Reduced installation depth
- Tolerant of variations from molding process
- High installation speeds
- Greatly reduced scrap rate
- Higher productivity
- Provides high process capability

## DESIGN GUIDE

### HOLE PREPARATION

The special Hi-Tork hole form is specifically designed for molding. Dimensions for the hole are detailed on the following page.

### INSTALLATION

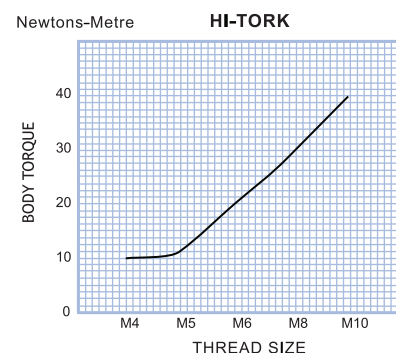
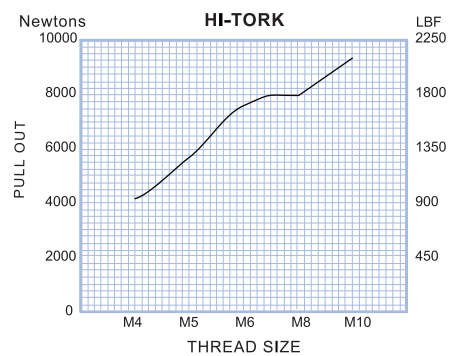
The fastener may be installed using either a pre-heating process or using heat generated by ultrasonics. Where pre-heating process is used, care must be exercised to ensure that the fastener softens but does not melt the plastic.

### WALL THICKNESS

A general guide to minimum wall thickness is given in the technical data table but this will vary dependant upon the nature of the plastic. Where thinner walls are required these can often be accommodated, but consultation with Bulten and pre-production testing is strongly advised.

### PERFORMANCE DATA

The complexity of materials and variations in service conditions make it impossible to detail fastener performance for specific applications. The chart gives a general guide and shows the relative performance of the insert in the range.

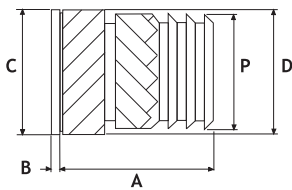


## HI-TORK INSERTS

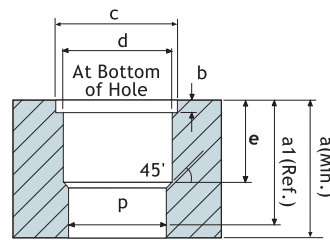
### TECHNICAL DATA

#### INSERTS

PRODUCT CODE [HT]



#### HOLE CONFIGURATION



Moulding Taper  
1° Inclusive

STANDARD MATERIAL: BRASS (B)  
Other materials possible on quotation.

### DIMENSIONS

#### ISO METRIC

Unit: Millimetres

Thread Size	Insert Length A	Head Height A	Head Diameter A	Insert Ø D	Pilot End Ø P	Rec.Hole Size -0.00 +0.10							Min. Wall Thickness
						a	a1	b	c	d	e	p	
M4	9.6	0.5	9.0	9.0	8.2	11.0	9.6	0.9	10.0	8.3	6.5	7.4	3.5
M5	11.0	0.5	10.5	10.5	9.7	12.0	11.0	0.9	11.4	9.9	6.5	8.6	4.5
M6	11.0	0.5	12.0	12.0	11.2	12.0	11.0	0.9	13.0	11.3	6.5	10.4	6.0
M8	11.0	0.5	13.7	13.7	12.9	12.0	11.0	0.9	14.0	13.0	6.5	12.1	8.0
M10	11.0	0.5	15.2	15.2	14.5	12.0	11.0	0.9	16.0	14.6	6.5	13.7	10.0

Other lengths possible on quotation.

### HOW TO SPECIFY

	HT
Product Code	HT-B-M4
Material Code	HT-B-M4
Thread Size	HT-B-M4